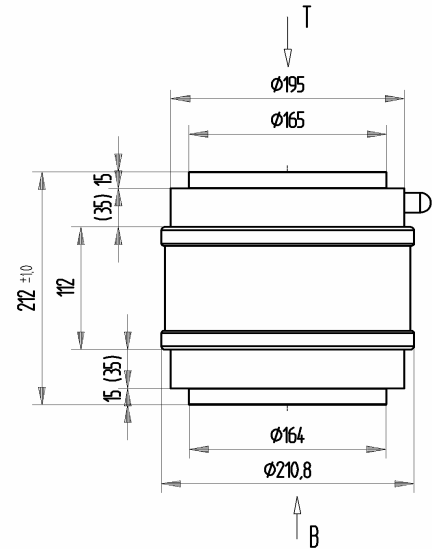


CFLA-2000AAC/55-PC-G

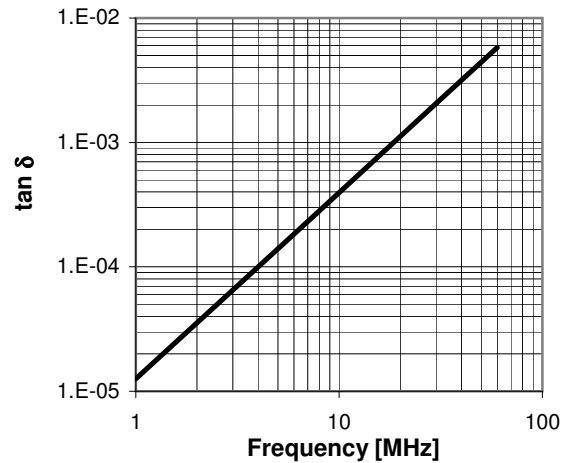
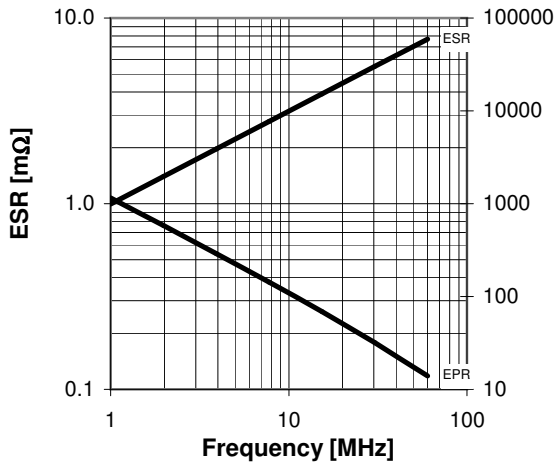
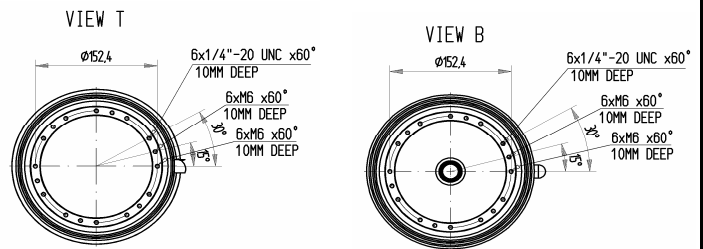
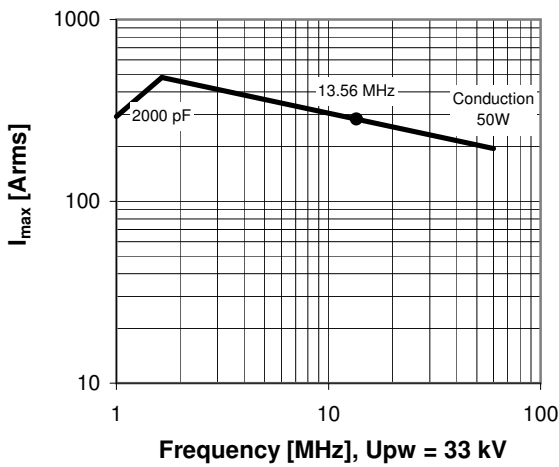
Old Type Designation: CF3C-2000F

www.comet.ch

Specifications	
Capacity C_{max} (nominal)	2000 pF
Voltage (Peak Test U_{pt} / Peak Working U_{pw})	55 kV / 33 kV
Capacity Tolerance	5%
Max. Current I_{max} at 13.56 MHz with	283 Arms
Conduction Cooling	50 W
Net Weight	15.2 kg



I_{max} at 25°C ambient and 125°C surface temp. for convection and conduction (50 W) cooling



Special Features:
Capacity Tolerance 5%