

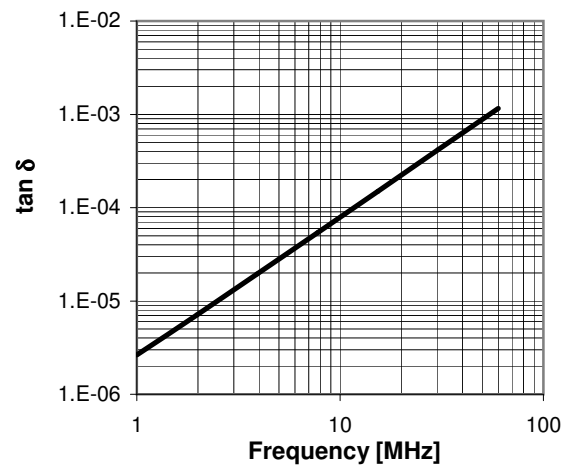
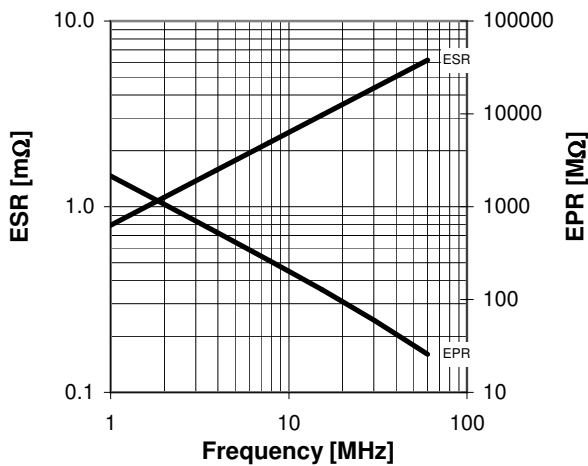
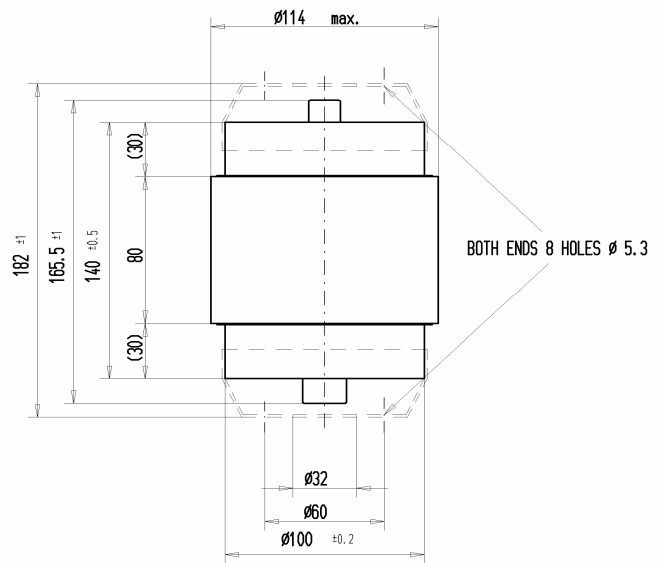
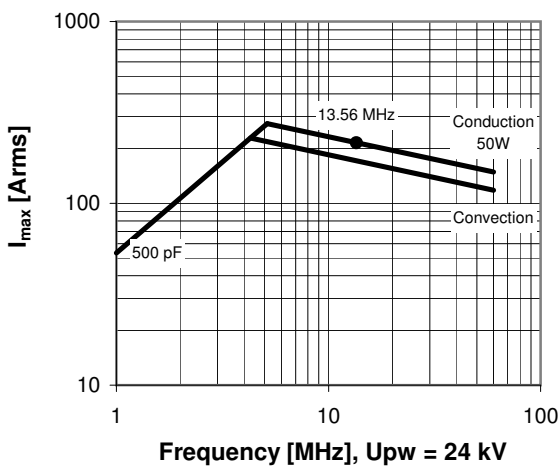
CFNA-500AAC/40-KB-G

Old Type Designation: CF2C-500E

www.comet.ch

Specifications	
Capacity C_{max} (nominal)	500 pF
Voltage (Peak Test U_{pt} / Peak Working U_{pw})	40 kV / 24 kV
Capacity Tolerance	5%
Max. Current I_{max} at 13.56 MHz with	215 Arms
Conduction Cooling	50 W
Net Weight	2.4 kg
Mounting Flange (optional)	058-035

I_{max} at 25°C ambient and 125°C surface temp. for convection and conduction (50 W) cooling



Special Features:
Capacity Tolerance 5%