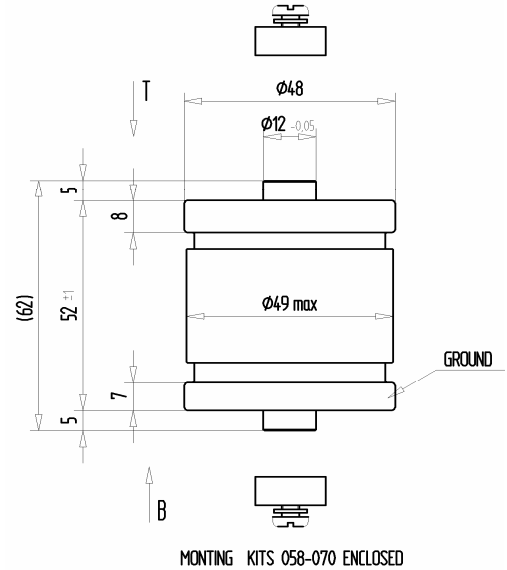
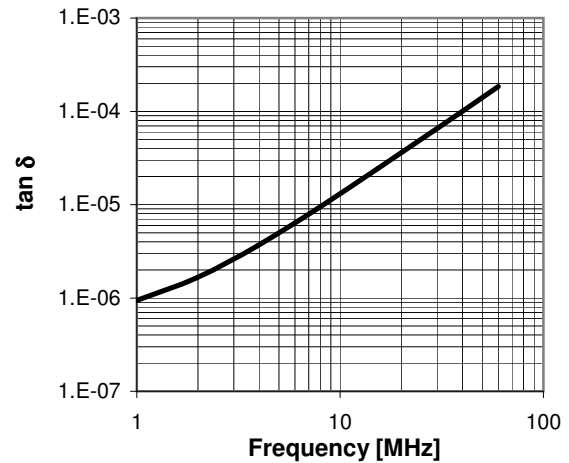
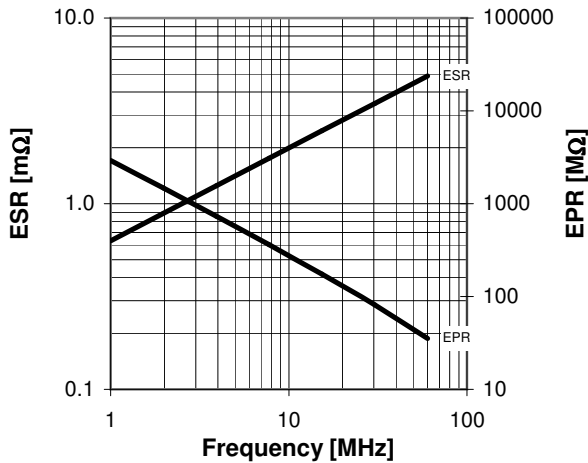
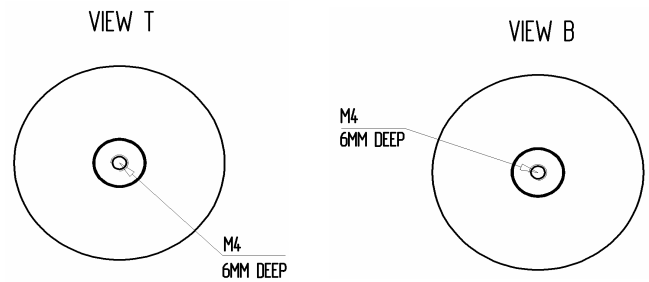
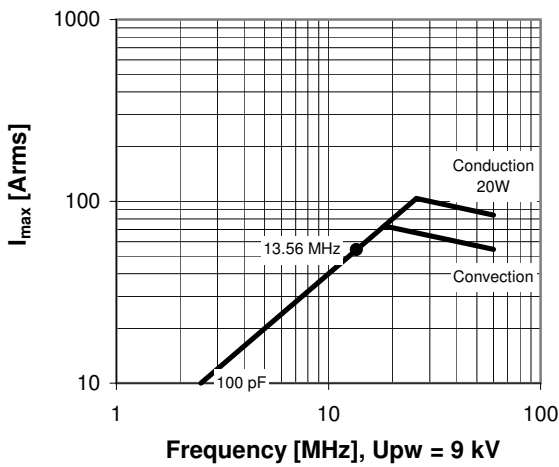


# CFMN-100CAC/15-AF-E

Specifications	
Capacity $C_{max}$ (nominal)	100 pF
Voltage (Peak Test $U_{pt}$ / Peak Working $U_{pw}$ )	15 kV / 9 kV
Capacity Tolerance	1%
Max. Current $I_{max}$ at 13.56 MHz with	54 Arms
Conduction Cooling	20 W
Net Weight	0.37 kg



$I_{max}$  at 25°C ambient and 125°C surface temp. for convection and conduction (20 W) cooling



Special Features:
Capacity Tolerance 1%